

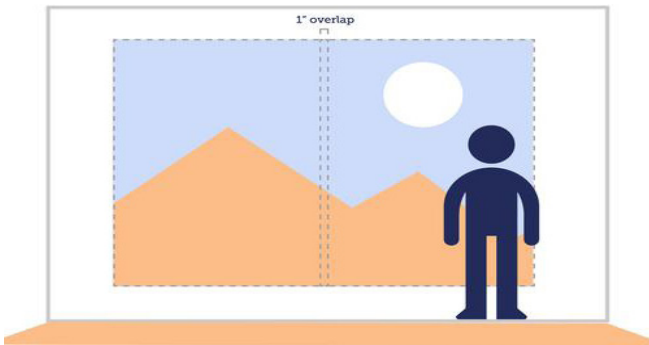
INSTALLATION.

PREP THE WALL



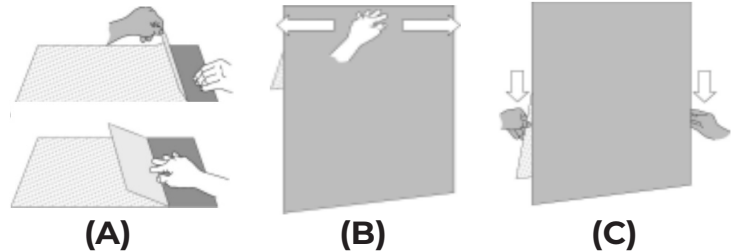
- CHECK THAT THE WALL HAS BEEN PRIMED AND PAINTED. IF NOT, WE RECOMMEND USING THE ROMAN PRO-935 CLEAR ADHESION PRIMER AND ALLOW 24 HOURS TO DRY.
- IF THE WALL WAS RECENTLY PAINTED, PLEASE WAIT 30 DAYS TO MAKE SURE THE PAINT HAS COMPLETELY OUTGASSED.
- TO CLEAN THE DUST OFF THE SURFACE, USE A DAMP CLOTH WITH WARM WATER ONLY (YOU MAY USE A DAB OF DAWN SOAP, IF NEEDED).

OVERLAPPING



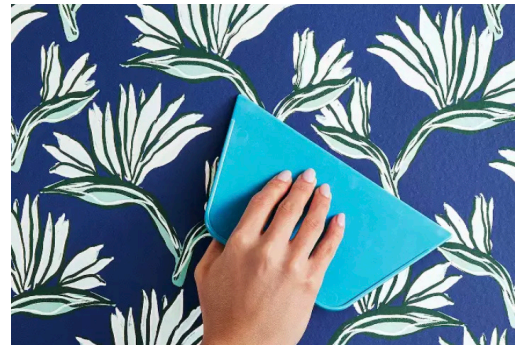
WE SUGGEST A 1" OVERLAP WHEN USING THE OPAQUE VERSIONS. DO NOT TRY TO SPLIT CUT AND BUTT THE OVERLAP WHEN USING THE OPAQUE MATERIAL, IT CAN LEAVE A WHITE LINE. IT IS OK TO SPLIT CUT THE OVERLAP ON THE NON-OPAQUE VERSIONS. BE CAREFUL USING TAPE TO ALIGN THE MATERIAL WITH LATEX INKS. REMOVING IT TOO FAST CAN PULL THE INK OFF.

LET'S APPLY



- A) BEGIN APPLICATION BY PEELING BACK THE BACK LINER 8-10" AND CREAMING THE UNDER-LINER.
 - B) ALIGN THE MATERIAL ON THE WALL AT YOUR DESIRED STARTING POINT.
 - C) ONCE IN POSITION, PEEL BACK LINER 6-8" AT A TIME.
- SQUEEGEE THE MATERIAL FROM THE MIDDLE TO THE EDGES. APPLY GOOD PRESSURE DURING APPLICATION.
 - OK TO PEEL AND RE-APPLY TO RELEASE BUBBLES,

TIPS + TRICKS



- USE NON-OPAQUE VERSIONS ONLY FOR GLASS, OR METAL SURFACES.
- USE EXS HIGH TACK ONLY ON SMOOTH FLOORS OR TIGHT WEAVE CARPETS.
- USE THE OPAQUE VERSION WHEN OVERLAPPING/PANELING.
- USE A VERY SHARP KNIFE WHEN CUTTING THE FABRIC.
- RECOMMEND THE OPA OVER THE OPAS WHEN PRINTING ON UV, LATEX INKS.

SUGGESTIONS

*PHOTO TEX CAN BE RE-POSITIONED MULTIPLE TIMES., ONCE THE ADHESIVE COLLECTS TOO MUCH DUST, DIRT OR FIBERS, IT WILL BECOME LESS EFFECTIVE IN STICKING PROPERLY TO THE SURFACE.

*IF A BUBBLE RE-APPEARS, LIGHTLY RUBBING AND PRESSING CAN REMOVE IT. YOU MAY ALSO USE A SEWING PIN TO POP THE BUBBLE, THEN SMOOTH IT OUT BY USING A CIRCULAR MOTION WITH YOUR FINGERS.