



Canon U.S.A., Inc.
BLI PaceSetter for Outstanding Serviceability
2018-2019

REDEFINING THE LARGE-FORMAT PRINTER.

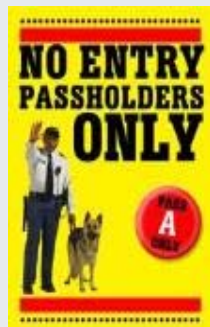


REDEFINING THE LARGE FORMAT PRINTER



Faster, Quieter, Lower Ink Consumption, Easier to Use, Poster Printing Software and more!!!

The TM Series of printers, with Canon innovative technologies built in, are uniquely positioned to build upon the legacy of the imagePROGRAF line that **Architects, Engineers** and the **Construction** markets have relied on for years as well as to capture emerging large format markets.



TECHNICAL DOCS & GENERAL USE



Single User

- 24" iPF610 Cassette
- 24" iPF670E No Stand, low end
- 24" iPF670 Low volume
- 24" TM-200 Mid volume
- 36" iPF770 Low volume
- 36" TM-300 Mid volume
- 36" TM-305 With hard drive
- 36" TX-3000 High Volume
- 44" TX-4000 High Volume

Workgroup size

Workgroup

TM SERIES: LINE-UP

36-inch

24-inch



TM-300



TM-300 MFP T36



TM-300 MFP L36ei



TM-200



TM-305



TM-305 MFP T36



TM-200 MFP L24ei

TM SERIES: WHAT'S INSIDE

- LUCIA TD Pigment Ink
- Ink Tanks Sizes 300 ml and 130 ml
- Quiet Operation
- Batch Printing
- Nesting & Tiling of files
- Small Footprint
- Intuitive Operation Panel
- Easy Roll Loading
- Fast File Processing Time
- Stacking Basket on TM-305
- USB Drive Direct Printing on TM-305
- Hot Swap Ink Tanks
- Remaining Roll management
- Clear Window
- Software Solutions



LUCIA TD PIGMENT INK

5-color Pigment Ink



LUCIA TD Pigment Ink

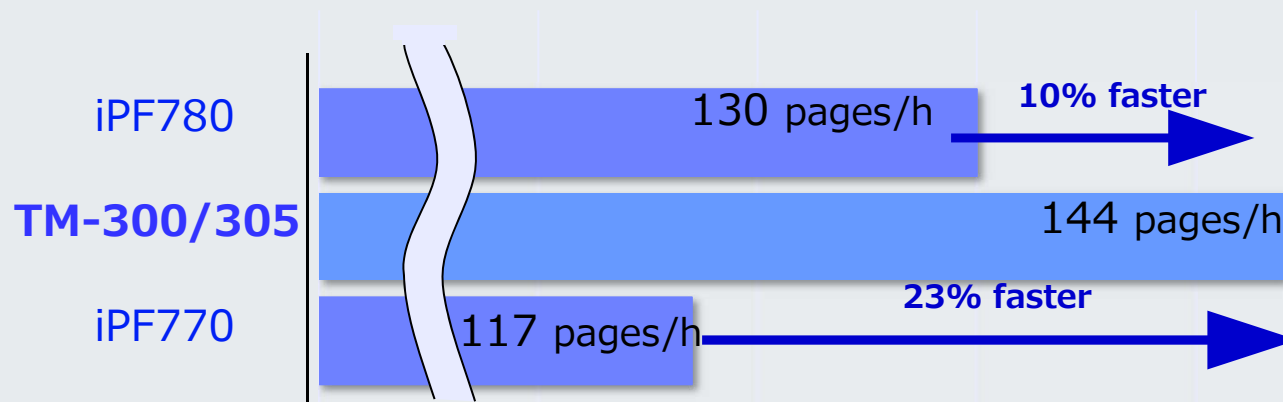
- Provides clear reproduction of lines with dense black and bleed resistance – ***For accurate replication of technical documents***
- Vivid colors on plain paper & coated papers - ***Bright colorful renderings, designs, posters, office documents and more***
- Better weather resistance than dye ink – ***For short term outdoor prints***



REDEFINING PRINT SPEED

The TM Series is faster than previous iPF models by optimizing the printing sequence which allows for faster processing between pages

Don't look at just how long one print takes but how long a set will. Can the competition keep up?

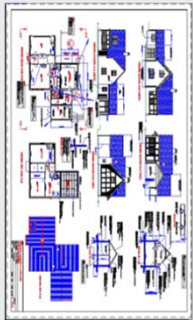


Continuous printing [1-hour continuous printing, A1 landscape drawing, plain paper, fastest mode*]



REDEFINING INK CONSUMPTION

The TM-series uses less ink than the iPF78x series
– for a more economical printer

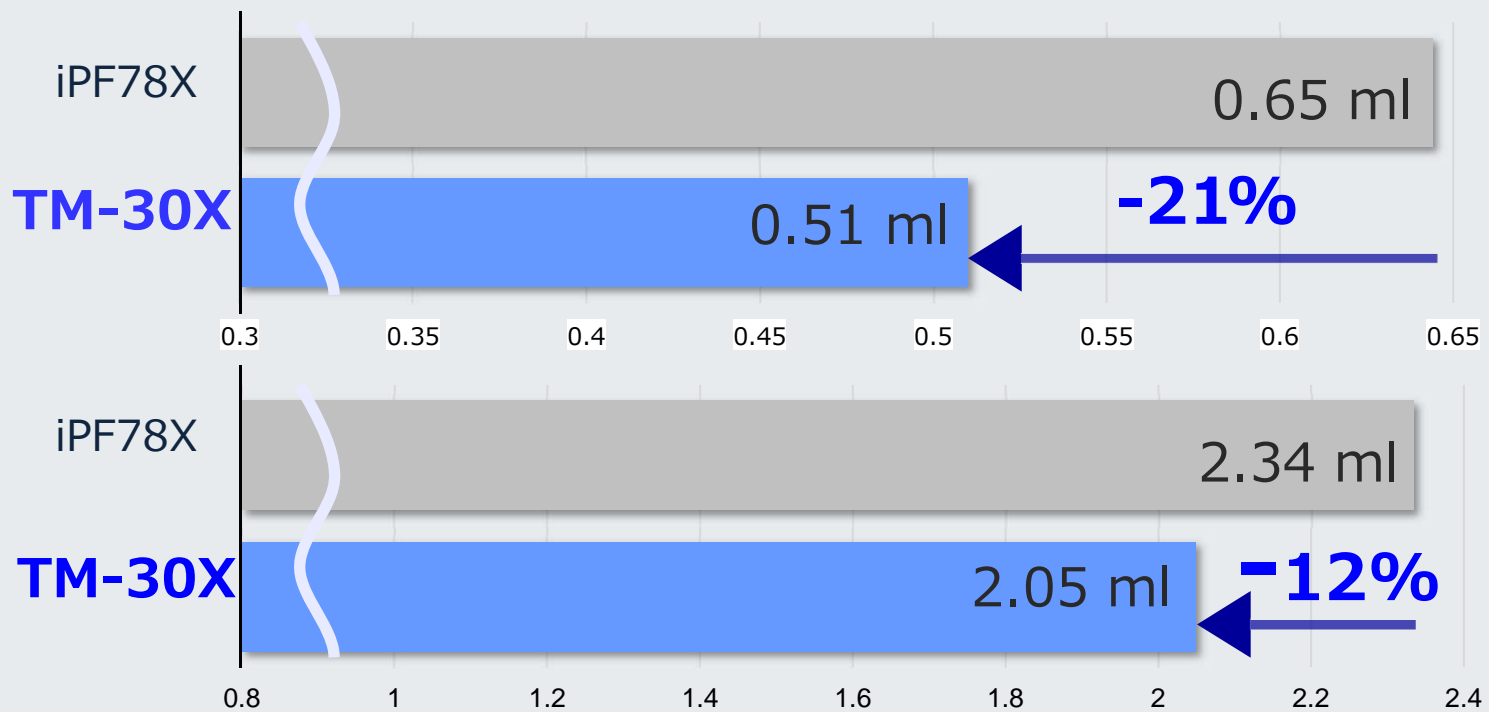


CAD



Poster

- Plain paper
- Standard mode
- A0 size



How much ink does the competition use?

REDEFINING NOISE LEVELS

The TM Series is 60% quieter than the iPF78x/68X series

Platen fan noise
75% lower

Cutter noise
**Reduced
intermittent
noise**

**By producing less noise the
TM series can fit into a wider
variety of environments than
other printers - less
distraction in a small office**

Media feeding
noise
60% lower



Exhaust fan's
noise
50% lower



REDEFINING EASE OF USE

Intuitive color LCD panel for easy operation, *even for beginner Large-format users* .

TM Series

3.0-inch color LCD

→ Easy access
Frequently-used
functions on first screen

→ Convenience
Touchscreen

→ Visibility
Color screen with clear
icons



iPF780

2.6-inch B&W LCD



**View a video on how to
load media directly from
the panel!!!**

REDEFINING THE SIZE OF A LARGE FORMAT PRINTER

The TM series is designed to fit in small environments like construction trailers, retail, corporate offices

Smaller than the iPF78X series the TM can fit into places where space is at a premium



PLUS Easy Media Roll Loading



Roll loading position:
2.75" closer to the front
than the iPF78X series

**No special skill
needed to change
paper**

REDEFINING THE PRINT PROCESS

Direct Printing from USB Flash Drive without using a PC on the TM-305 model

- Simplifies offsite printing like at construction sites



Available for TM-305 only

Supported
file format:



Multiple-page files can be printed



Preview in the operation panel

Users simply walk up to the printer with a USB thumb drive and print blueprints, maps, posters, charts, images and more....without turning on a computer!

SECURITY FEATURES

The TM has security features built in

The TM Series can be used in corporate, government's and other environments that need added security

		TX Series	TM Series	iPF785
Secure Storage	Self encrypting hard disk	✓		
	Secure disc erase	✓	✓	✓
	Secure file erase	✓ *1	✓ *1	
Secure Communication	802.1x authentication	✓	✓	
	SNMPv3	✓	✓	✓
	SSL/TLS	✓ *2	✓ *2	
	IPSec	✓	✓	
Secure Management	Panel lock by Remote UI	✓	✓	
	Restricted functionality	✓	✓	✓
	Hide IP from panel	✓	✓	✓
	Panel access control	✓	✓	✓
	Secure print by PIN	✓ *3	✓ *3	
Secure Interface	Disable USB drive	✓	✓	
	Disable F/W update through USB	✓	✓	✓
		✓	✓	
	Disable Interface	✓	✓	



*1: Support schedule is under study *2: Printing from smartphone app cannot be performed
 *3: Only TM-305/205(Support schedule is under study)

REDEFINING PAPER MANAGEMENT

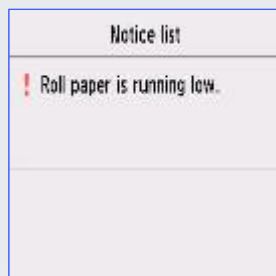
The TM Series has 2 ways to estimate the amount of remaining paper

Save time & money by not running out of paper during printing

Displays a warning on the panel

Easily estimates the amount left without printing barcodes

No ink or paper is used and saves time for printing/scanning barcodes



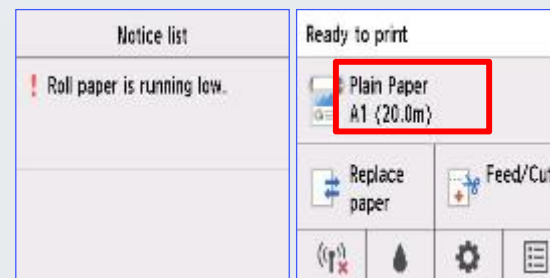
Displays just warning

Print barcodes

Exact detection of paper type and remaining amount



Print information such as paper type and remaining in barcodes



Displays paper type and remaining amount besides warning

HOT-SWAP INK TANKS

The TM series allows users to replace an ink tank replacement during printing



Even if the ink tanks run out of ink, printers keep some ink in reserve in sub-ink tanks



Visual display indicates ink remaining in 3 levels

- **Save Time & Money by not running out of ink during a long print job**
- **Sub ink tank system allows for virtually all the ink in the tank to be used**
- **Ask the competition if they have this functionality!**

REDEFINING THE SCAN-TO-COPY/FILE SHARE SOLUTION



TM MFP T36 solutions

&



TM MFP Lei Solutions

SCAN-TO- COPY/FILE/SHARE SOLUTIONS

36 inch

TM-305 MFP

TM-300 MFP

24 inch

TM-200 MFP

T-
Scanner



T36



T36

L-
Scanner



L36ei



L24ei

TM MFP T36 SYSTEM

Fast scan speeds: up to 13" per second

Faster scanning means more productivity

CIS Scanner with up to 1200 dpi
SingleSensor technology,
enabling high-precision
scanning that produces
sharp, fine lines and text.

Scan media up to 2.0 mm
thick
**Less limitations on
what can be scanned**

Printer & Scanner work
independently of each
**Maximize productivity
by printing and
scanning at the same
time**

15.6 LCD Touchscreen Panel for
large preview of scans
Easy to view and edit scans

SmartWorks MFP 5 included
**Advanced features that are
simple to use**

Monitor & Scanner mount
directly to the printer
**Integrated design saves
space**

TM-305 includes Flat Stacker Basket
**Basket can be used to neatly
stack sets of prints or used to
catch posters**



TM-305 MFP T36 shown

SMARTWORKS MFP 5

SmartWorks MFP, scanning software simplifies large-format scanning or copying with intuitive operations. enables image editing including: deskew, adjust brightness, removing the background, flip scans horizontally, and more.

Users can edit scans efficiently as they preview changes on the large screen, which can reduce copying errors.



Scanned data can be saved in various file formats

- PDF - Multi Page PDF – JPEG – TIFF - PDF/A - DWF

Even inexperienced users can easily scan, copy, or edit

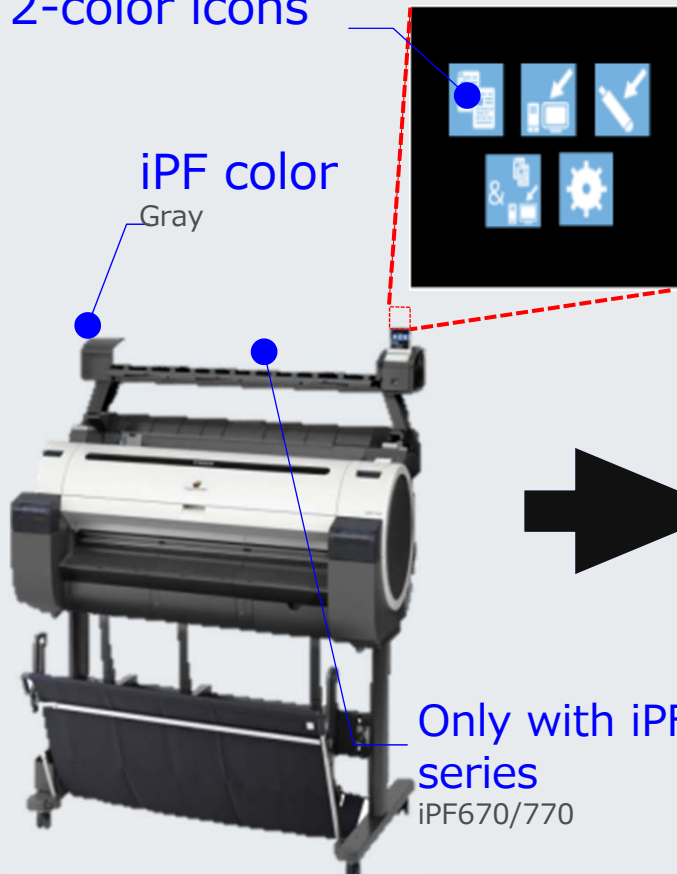
REDEFINING THE L SERIES MFP SYSTEMS

MFP L36ei/L24ei

2-color icons

iPF color

Gray

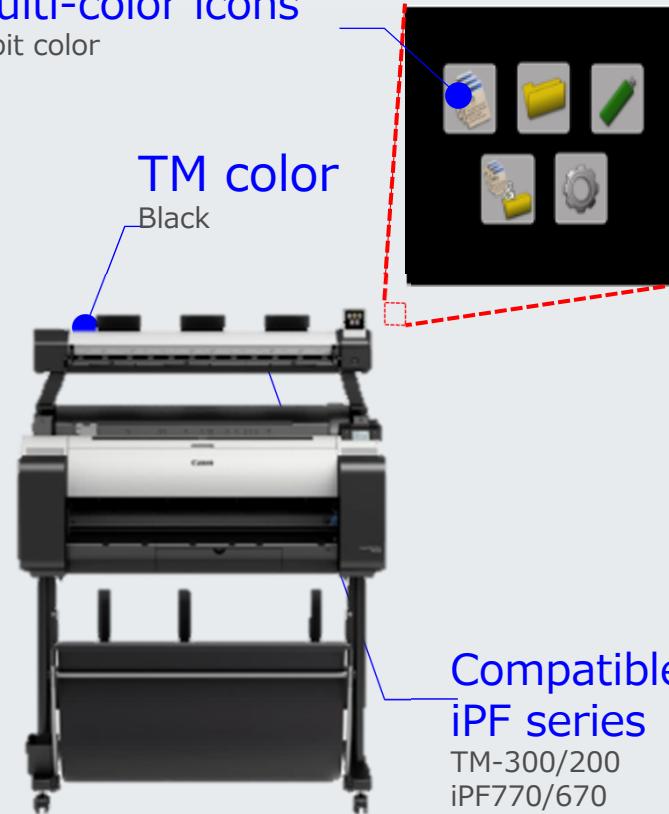


Multi-color icons

8-bit color

TM color

Black

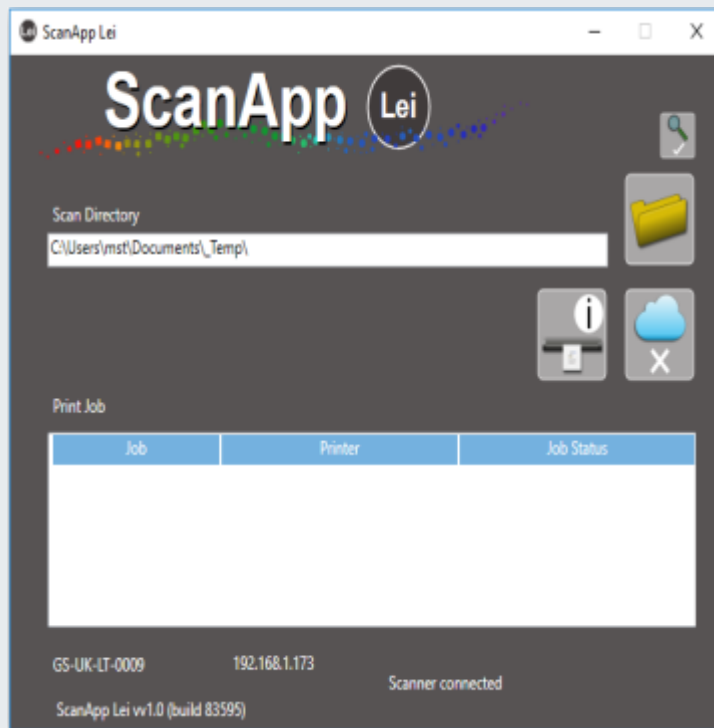


L36/L24

L36ei/L24ei

ScanApp Lei

MFP L36ei/L24ei



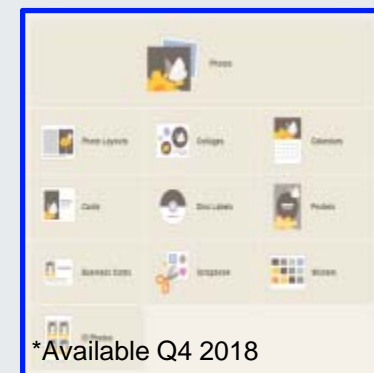
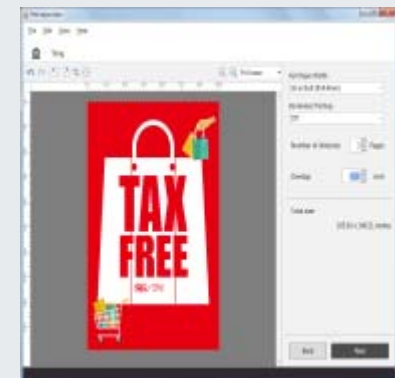
Dedicated utility software “ScanApp Lei” to improve efficiency in scanning and copying

- Continuous scan, continuous copy
- Copy & Archive
- Scan to network folder
- Scan to Cloud (via DPS)
- Scan to USB flash drive (through network)

Simple to use for the low volume and entry level user

SOFTWARE SOLUTIONS INCLUDED

- Free Layout Plus
 - Tiling
 - Folded Duplex
- Direct Print & Share
- Easy-PhotoPrint Editor*
- Unified Printer Driver for TX Series/TM Series
- AutoCAD Optimized Printer Driver
- Accounting Manager
 - Email notification of accounting information
- Quick Utility Toolbox
- Media Configuration Tool
- Wi-Fi Mobile Printing Application
 - Apple air print and Canon Print Services



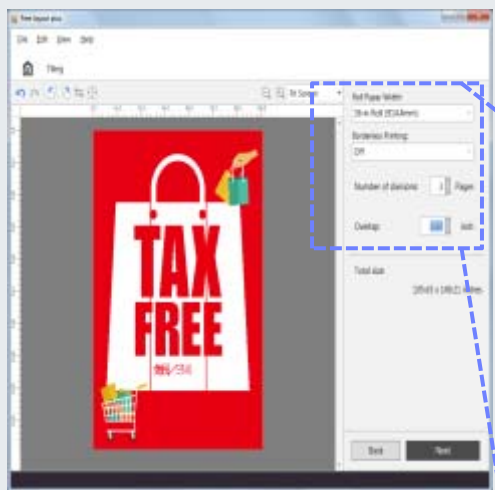
*Available Q4 2018

FREE LAYOUT PLUS

NEW

Accessed as a virtual printer or as a Plug-in from Microsoft Office programs, Free Layout Plus enables

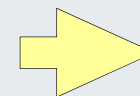
- Nesting of files
- Creation of a folded duplex print
- Tiling of a file



Number of divisions: 3 Pages

Overlap: 0.60 inch

Total size:
105.63 x 149.21 inches



Extra-large posters, larger than the printer width can be made up simply by entering the number of divisions and overlap width

DIRECT PRINT & SHARE

Canon's Direct Print & Share cloud-based portal solution

Images and files can be uploaded to and downloaded from any WebDAV compliant cloud server*.

- ❖ Integration with software solutions such as AutoCAD,
- ❖ Direct printing of PDF, TIFF, JPEG and HP-GL/2 file formats with no other application or drivers necessary
- ❖ Drag and Drop printing feature
- ❖ Support for PosterArtist files

New Features

- Fast processing of multi-page PDFs
- Registering and applying print settings
- Thumbnail previews of multiple print jobs
- Display of ink levels and maintenance cartridge capacity
- Inserting a divider sheet between jobs
- Larger preview window



**Share files from
the office to an
offsite printer**

*Your server must be compatible with a webDAV enabled cloud account, including but not limited to, Google, Carbonite or Rackspace, to take advantage of the cloud functionality. Storage capacity and any pricing thereof is based on the third-party cloud provider's current offering, at its sole discretion. Your cloud account is subject to the third-party cloud provider's terms and conditions. Neither Canon Inc. nor Canon U.S.A., Inc. represents or warrants any third party product, service or feature referenced hereunder.



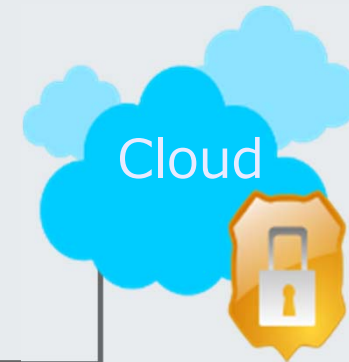
Downloadable from <http://www.usa.canon.com/downloads>

POSTERARTIST LITE

Poster creation software that allows user to create posters, signs and banners in just four easy steps!

1. Select Template
2. Choose Print Options
3. Edit Content
4. Print

Templates and other files can be accessed from the cloud



NEW



More flexibility and freedom in updating and adding content

- Add content as needed

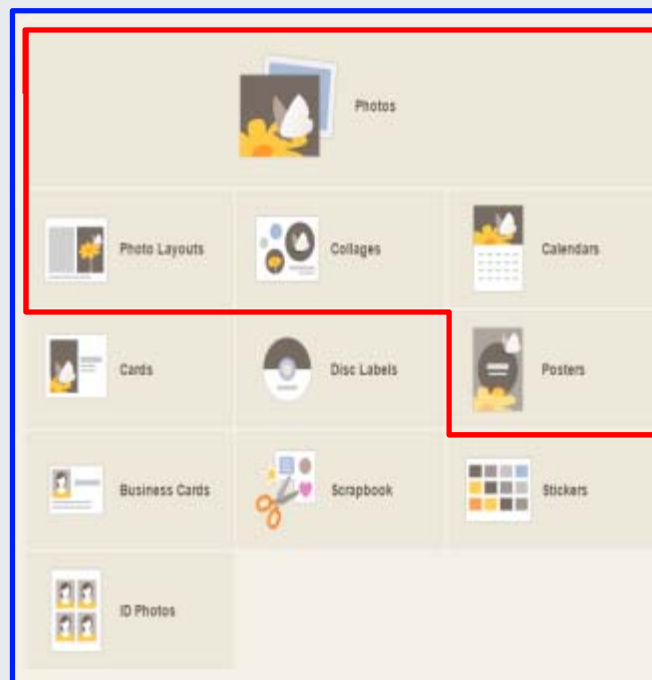
EASY-PHOTOPRINT EDITOR

NEW

Simple and convenient creation of posters



Supports Windows, Mac, iOS, Android



Available with TM Series*

- Photo print
- Photo layout
- Collage
- Calendar
- Poster

Available with PIXMA Series

Posters can be created from Mac and mobile devices



*To be released in December 2018

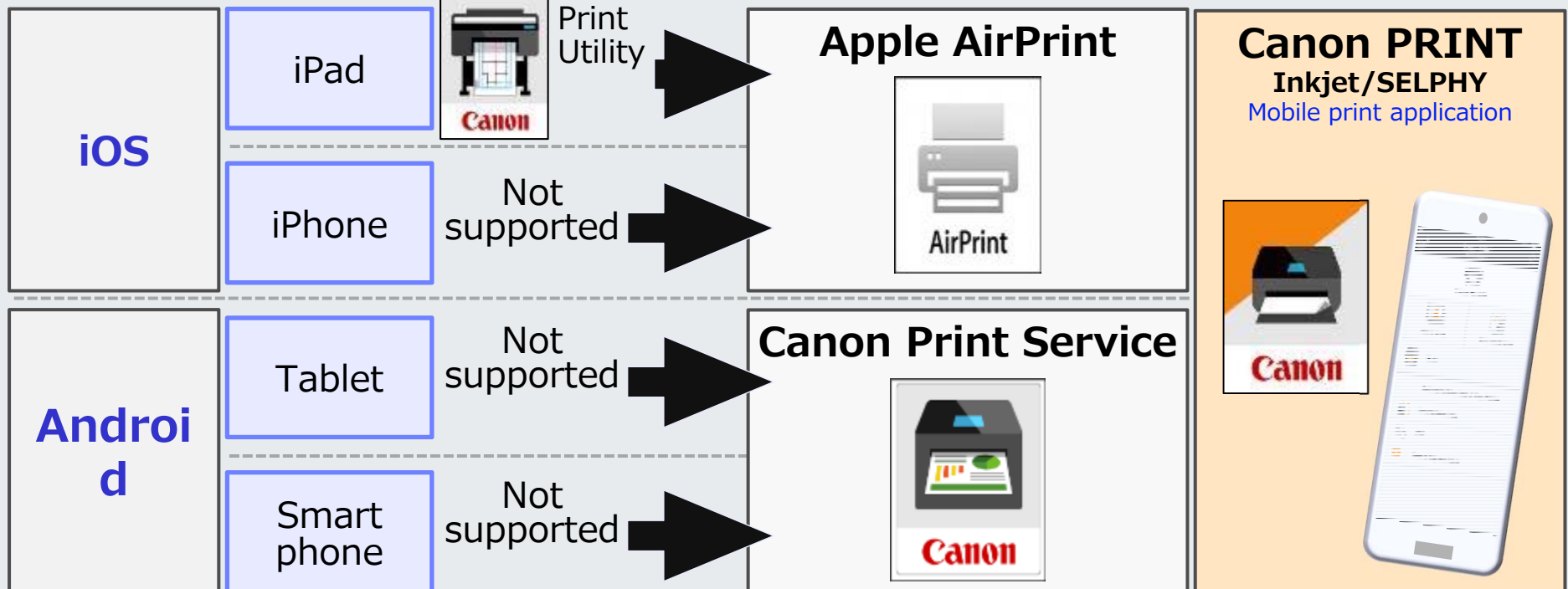
WI-FI MOBILE PRINTING APPLICATION

NEW

Supports printing from iOS and Android

iPF780/770

TM Series



Android is a trademark of Google LLC
AirPrint and the AirPrint logo are trademarks of Apple Inc.

CANON PRINT INKJET/SELPHY

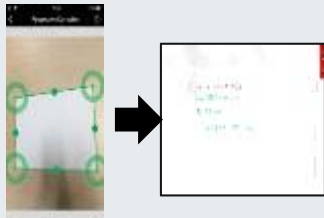
NEW

Easily print from smartphone

Print from Microsoft documents

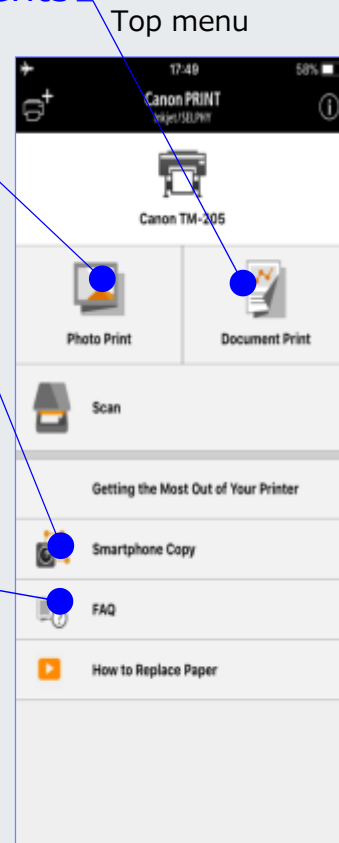
Photo print

Smartphone Copy



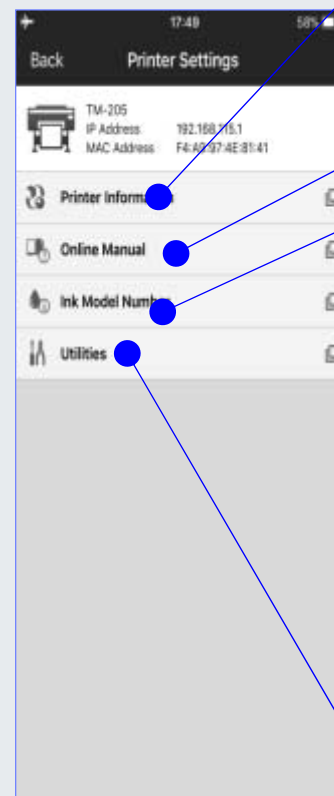
Take a photo of whiteboard and straighten distortion to print
➔ Shared right away at the meeting

Video assistance



Quickly check printer status and ink level

Printer settings



Displays printer status and ink level (Remote UI)

Manual

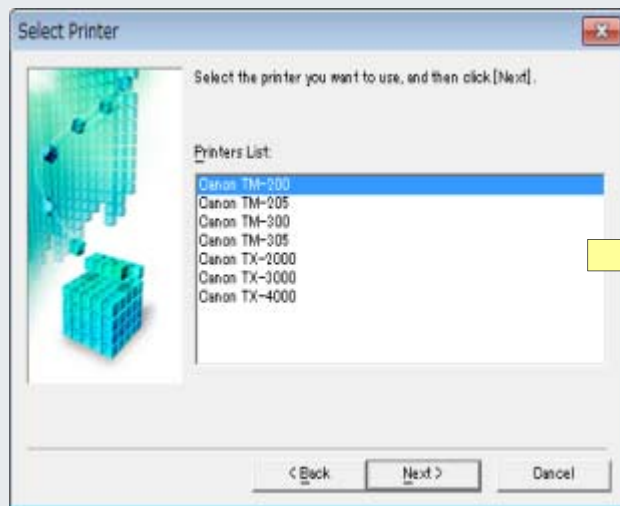
Ink model info



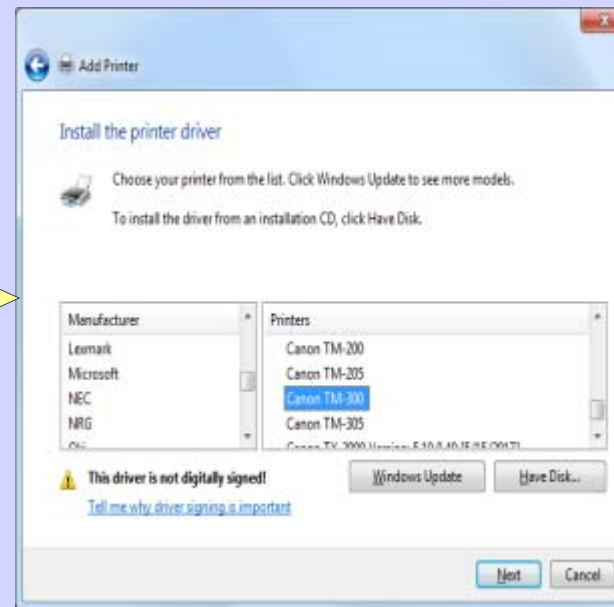
UI Screenshots are provisional

UNIFIED PRINTER DRIVER FOR TM SERIES

One Print Driver for multiple printers – including TX series



1. Install any of the printers



2. [Add Printer] to add a new model



- TX-4000
- TX-3000

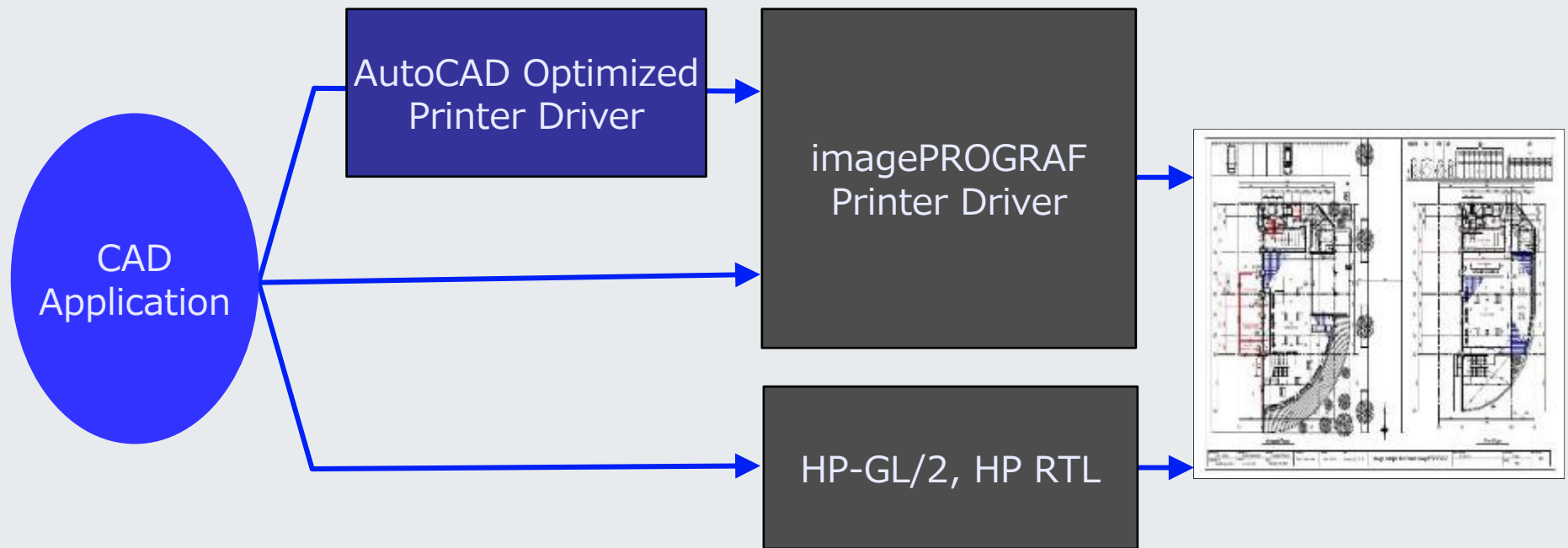


- TM-305
- TM-300
- TM-200

TM Series

AUTOCAD OPTIMIZED PRINTER DRIVER

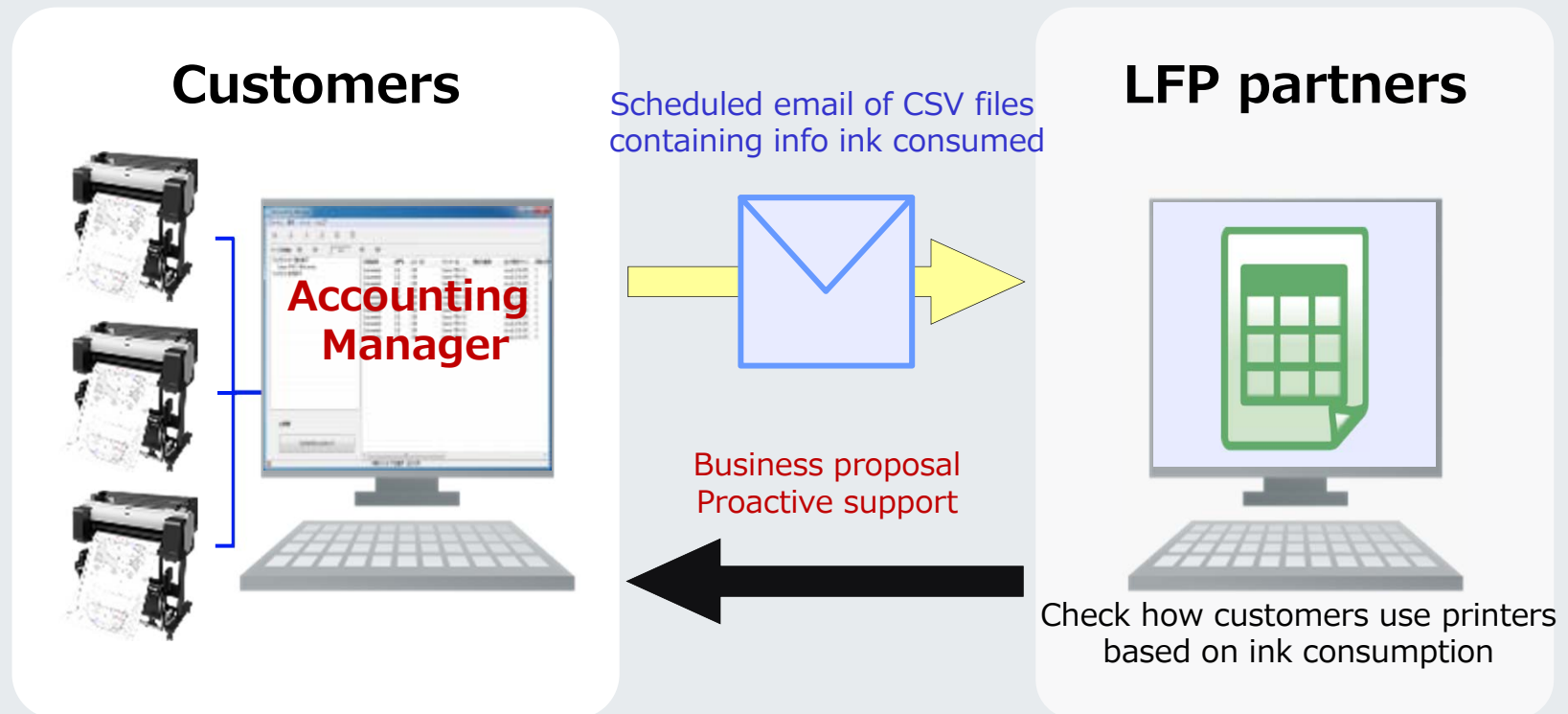
Accurate printing of data created with AutoCAD



ACCOUNTING MANAGER

NEW

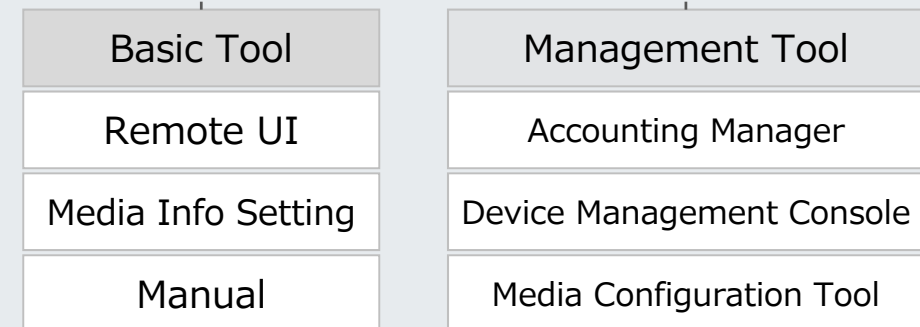
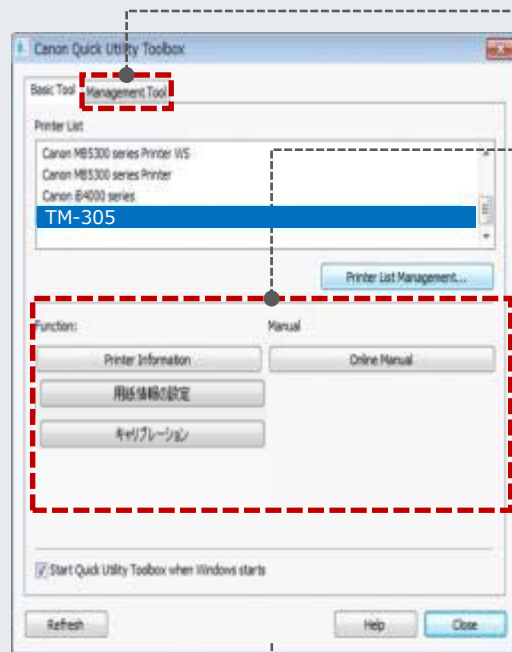
Email notification of accounting information



Proactive support can be provided

QUICK UTILITY TOOLBOX

Easy access to application and functions for TM series



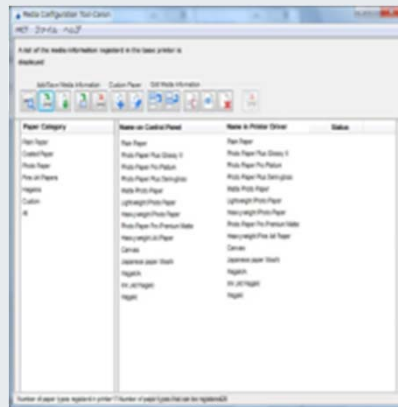
*TM series does not support color calibration

Click the icon residing in the system tray to display a pop-up window



MEDIA CONFIGURATION TOOL

Media information can be updated to suit user's needs



Creates and edits print settings

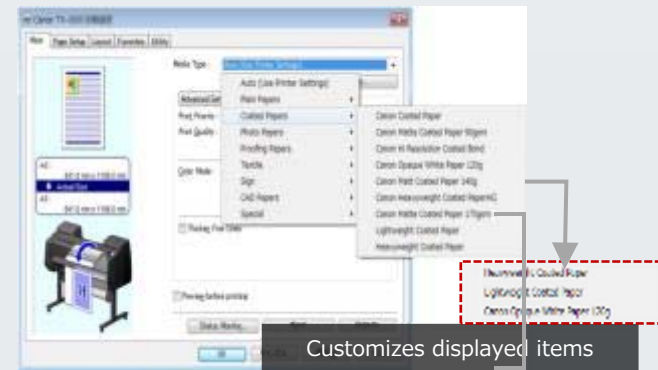
Edit

Managing media information displayed in the printer driver UI

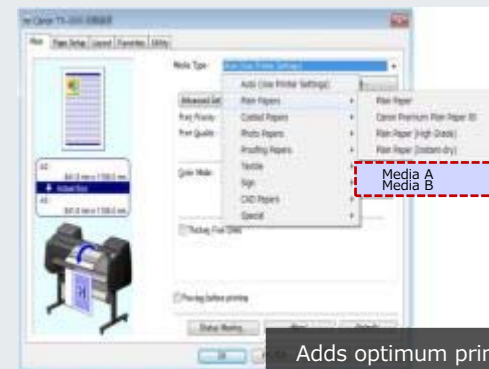
Renaming, showing/hiding, and rearranging media

Create/Include

Adding media information



Customizes displayed items



Adds optimum printer settings

[Items] Paper feed adjustment, ink drying time, ICC profile setting, and others

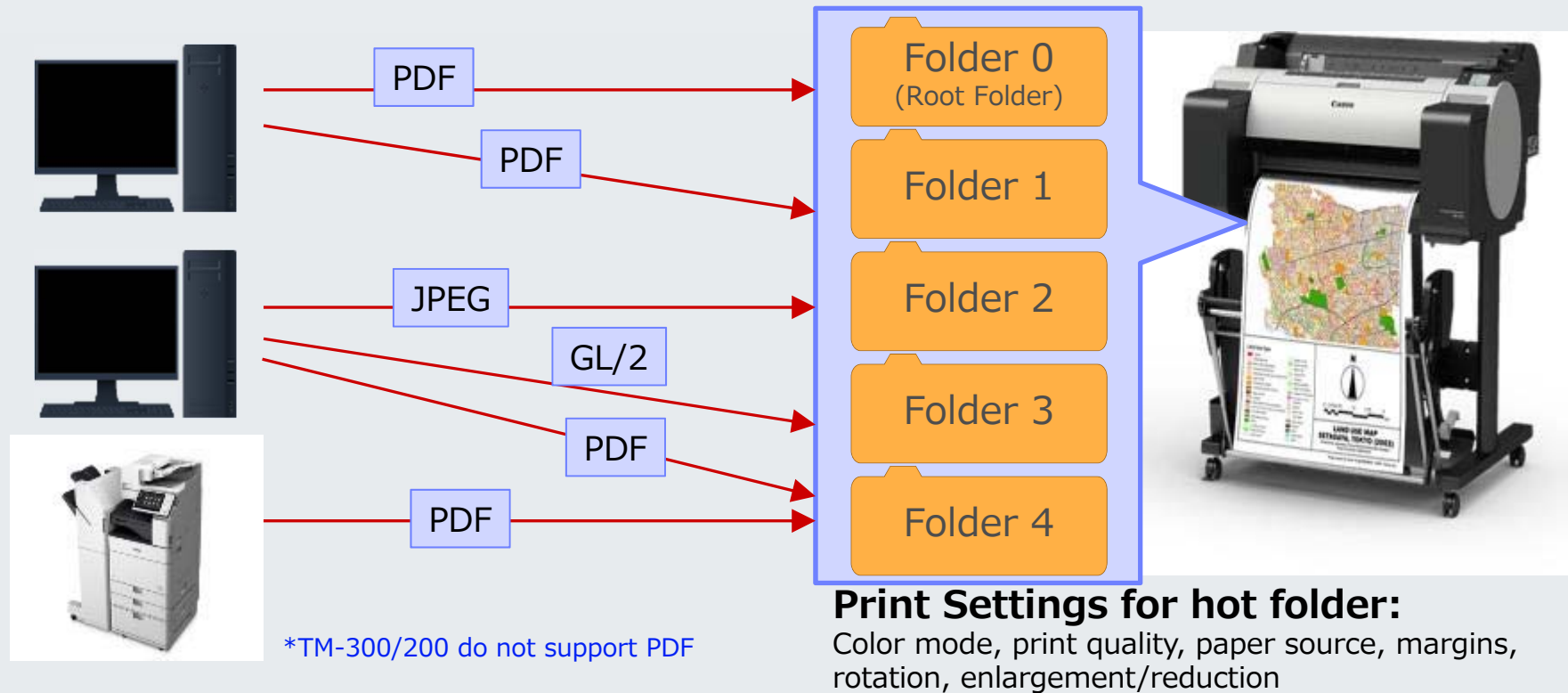
Get the most out of the printer



**Current Dye and pigment 5-color ink models do not support creating custom media information

PRINTING DIRECTLY FROM FTP

Hot folders can be set up on the printer for high-end CAD users



How the TM Stacks Up

COMPARISON WITH CURRENT MODELS

	TM Series	Current Models		TX Series
		iPF78x/68x	iPF770/670	
Usability	Quiet operation	—	—	—
	"Slide-in" roll loading (Pre-loading position is 5.75" closer to the front)	"Slide-in"	"Slide-in"	Just place a roll
	Color touchscreen panel	—	—	Supported
	Clear window	—	—	—
	Video assistance of media handling	—	—	—
	Security features(No Disk encryption)	Partially supported	Partially supported	Supported (incl. Disk encryption)
Productivity	Fast printing(max. 24 s/A1 portrait)	25 s	28 s	24 s
	300 ml/130 ml ink tanks	300 ml, 130 ml	Only 130ml	700 ml, 330 ml, 160 ml
	Hot-swap ink tanks	Supported	Supported	Supported
Ink Type	LUCIA TD pigment ink	Dye/pg	Dye/pg	LUCIA TD
MFP Solution	T36 (TM305/300)	M40	Le	TX Supported
	L24ei/L36ei	—	Supported	—

COMPARISON WITH CURRENT MODELS

Software	TM Series	Current Models		TX Series
		iPF78x/68x	iPF770/670	
Unified Printer driver	●	—	—	●
Direct Print & Share	●	●	●	●
AutoCAD optimized printer driver	●	●	●	●
PosterArtist/ PosterArtist Lite	●	●	●	●
Free Layout plus	●	—	—	●
Canon PRINT Inkjet/SELPHY	●	—	—	—
Canon Print Service	●	—	—	●
Apple AirPrint	●	—	—	To be supported in 4Q '18
Easy-PhotoPrint Editor	●	—	—	—
Device Management Console	●	—	—	●
Accounting Manager	●	—	—	●
Media Configuration Tool	●	●	●	●
Quick Utility Toolbox	●	—	—	●

Differences in TM Series Function Specifications

	HDD Model TM-305	Non-HDD Model TM-200/300
USB direct printing	Supported	Not supported
Stacking Basket	Supported	Not supported
Network Direct printing	JPEG/PDF/HP-GL/2	JPEG/HP-GL/2
Output method/box printing	Supported	Not supported
Printing after reception (save) is completed	Supported	Not supported
Disk erase	Supported	Not supported
PIN Code printing	Scheduled for support	Not supported
Secure Disk erase	Supported	Not supported
Secure File erase	Scheduled for support	Not supported
Number of retained job logs	10,000 records (on HDD)	32 records (Power off : 10 records)
GL/2 file processing HDD memory	128GB	None

Function differences derived from installation of HDD

TOP THREE COMPETITIVE ADVANTAGES

SPEED

Fastest Possible Print Rate for A1/D-Sized Line Drawings

HP DesignJet T520	35 seconds
Epson SureColor T3270	28 seconds
Canon TM-200/TM-300	24 seconds

OFFICE FRIENDLY

- 60% Quieter from current models
 - Smallest Footprint
 - Stacking Capabilities
 - Print directly from USB

WEATHER RESISTANT INK

LUCIA TD Pigment Ink optimizes print quality on plain paper and allows for outdoor viewing.



24" SIDE-BY-SIDE-FEATURES

imagePROGRAF
TM-200

BRAND/MODEL	CANON TM-200	HP DesignJet T520	Epson SureColor T3270
MSRP	\$2,495	\$2,105	\$2,995
Width	24"	24"	24"
Max. Print Speed (A1/D-sized Line Drawing)	24 Seconds	35 Seconds	28 Seconds
Media Rolls	One	One	One
Media Output	Basket (Standard)	Media Bin	Catch Basket
Mobile Printer App	YES	YES	N/A
Cloud File Sharing	YES	NO	N/A
Wi-Fi Enabled	YES	YES	N/A
Hot Swap Ink Tanks	YES	NO	N/A
Max. Resolution	2400 x 1200	2400 x 1200	2880 x 1440
Memory	2 GB (Physical)	1 GB	1 GB
Ink Tank Size	90 ml (C, M, Y, BK, MBK,: Starter Use Only), 130/300 ml	29 ml (C, M, Y), 38/80 ml (K)	110/350/700 ml
Ink Type	Pigment	Dye (C, M, Y), Pigment (K)	Pigment
Number of Colors	5	4	5
Ink Colors	C, M, Y, BK, MBK	C, M, Y, K	C, M, Y, pK or mK
Line Accuracy	0.1%	0.1%	0.1%
Minimum Line Weight	0.02 mm	0.02 mm	0.018 mm
Print Languages	SGRaster, HP-GL/2, HP RTL, JPEG	HP PCL GUI, HP-GL/2, HP-RTL, CALS G4, JPEG	Epson Precision XD, HPGL/2, HP-RTL, (Optional Adobe Post Script 3)
Workflow Solutions (Standard)	Accounting Manager, Apple AirPrint, Canon Print Service, Canon PRINT Inkjet/Selphy, Device Management Console, Direct Print & Share, Easy-PhotoPrint Editor, Free Layout Plus, imagePROGRAF Printer Driver for Windows®/Mac®, Media Configuration Tool, Optimized Driver for AutoCAD, PosterArtist Lite for Windows, QuickUtility Toolbox.	Windows® and Mac® Printer Drivers, Apple AirPrint, HP Print Service Plugin for Android, HP Print for Chrome App, HP ePrint, HP Smart App	Epson Professional Print Drivers for Windows and Mac, Job Accounting Software for Windows, Print Plug-in for Microsoft Office, Epson CopyFactory, Epson Print Sever HDD Utility

36" Side-by-Side-Features

ImagePROGRAF
TM-300

ImagePROGRAF
TM-305

BRAND/MODEL	CANON TM-300/305	HP DesignJet T520	HP DesignJet T730	Epson SureColor T3270
MSRP	\$4,995/TBD	\$2,995	\$3,595	\$3,995
Width	36"	36"	36"	36"
Max. Print Speed (A1/D-sized Line Drawing)	24 Seconds	35 Seconds	25 Seconds	28 Seconds
Media Rolls	One	One	One	One (Option for Two)
Media Output	Basket (Standard)	Media Bin	Media Bin	Catch Basket
Mobile Printer App	YES	YES	YES	N/A
Cloud File Sharing	YES	NO	NO	N/A
Wi-Fi Enabled	YES	YES	YES	N/A
Hot Swap Ink Tanks	YES	NO	NO	N/A
Max. Resolution	2400 x 1200	2400 x 1200	2400 x 1200	2880 x 1440
Memory	2 GB (Physical)	1 GB	1 GB	1 GB
Ink Tank Size	90 ml (C, M, Y, BK, MBK,: Starter Use Only), 130/300 ml	29 ml (C, M, Y), 38/80 ml (K)	40/ 140/ 300 ml, 69 (mK Only)	110/350/700 ml
Ink Type	Pigment	Dye (C, M, Y), Pigment (K)	Dye (C, M, Y), Pigment (K)	Pigment
Number of Colors	5	4	4	5
Ink Colors	C, M, Y, BK, MBK	C, M, Y, K	C, M, Y, K	C, M, Y, pK or mK
Line Accuracy	0.1%	0.1%	0.1%	0.1%
Minimum Line Weight	0.02 mm	0.02 mm	0.02 mm	0.018 mm
Print Languages	SGRaster, HP-GL/2, HP RTL, JPEG	HP PCL GUI, HP-GL/2, HP-RTL, CALS G4, JPEG	HP-GL/2, HP-RTL, HP PCL3 GUI, CALS G4, JPEG, TIFF, URF	Epson Precision XD, HPGL/2, HP-RTL, (Optional Adobe Post Script 3)
Workflow Solutions (Standard)	Accounting Manager, Apple AirPrint, Canon Print Service, Canon PRINT Inkjet/Selphy, Device Management Console, Direct Print & Share, Easy-PhotoPrint Editor, Free Layout Plus, imagePROGRAF Printer Driver for Windows®/Mac®, Media Configuration Tool, Optimized Driver for AutoCAD, PosterArtist Lite for Windows, Quick! Utility Toolbox	Windows® and Mac® Printer Drivers, Apple AirPrint, HP Print Service Plugin for Android, HP Print for Chrome App, HP ePrint, HP Smart App	Windows® and Mac® Printer Drivers, Apple AirPrint, HP Print Service Plugin for Android, HP Print for Chrome App, HP ePrint, HP Smart App	Epson Professional Print Drivers for Windows and Mac, Job Accounting Software for Windows, Print Plug-in for Microsoft Office, Epson CopyFactory, Epson Print Sever HDD Utility

Thank you