

BANNER UPS®

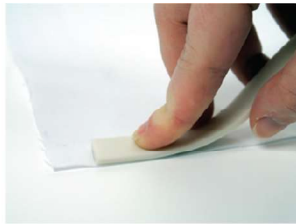
# KEDER tape



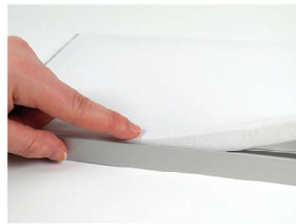
**Make SEG signs without sewing!**



Peel liner



Stick to fabric



Tuck into SEG frame



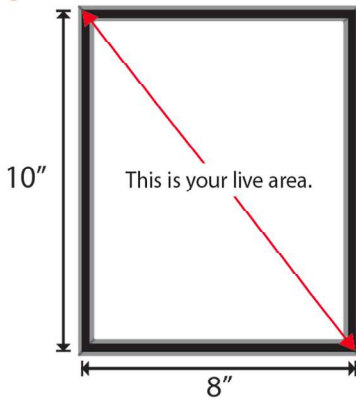
Remove/Replace as needed

BANNER UPS®

## KEDER tape

### Application Instructions

1.



Measure frame size using the outer edge of the frame slot

2.



Cut graphic a minimum of .75" larger than the live area on all sides.

3.



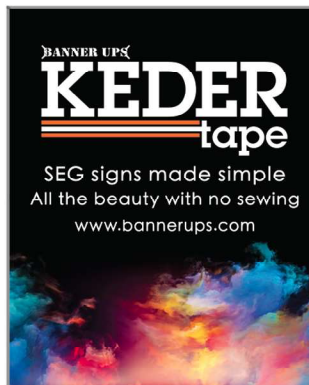
On back of fabric align inner edge of KederTape with outer edge of the live area. Lightly press KederTape on fabric. Placing wider will loosen the graphic when installed; placing it narrower will tighten.

4.



Test the fit the graphic into frame. If needed peel back and reposition to achieve desired level of tension. Next, firmly press KederTape to fabric with hard roller for max adhesion. Cut off excess fabric along edges and at corners. Your graphic is now ready for installation into frame.

5.



**Tuck keder into frame.  
Super easy no more sewing!**

TIP: Before installing lubricating the inside of the frame slot with silicone or WD-40 can prevent adhesion to the frame and make removal and replacement of graphic easier.

TIP: A metal nail file is a perfect tool to neatly tuck the graphic into the frame.

14mm x 80ft Spool

Available at  
**LexJet®** 800-453-9538

