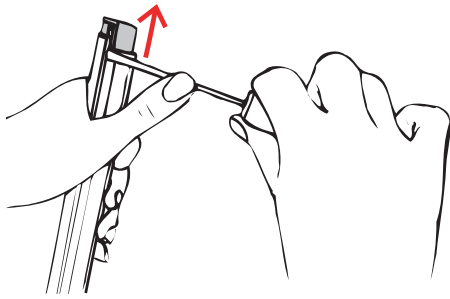
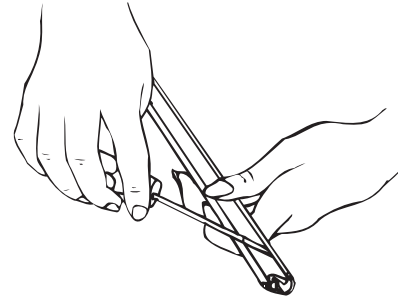


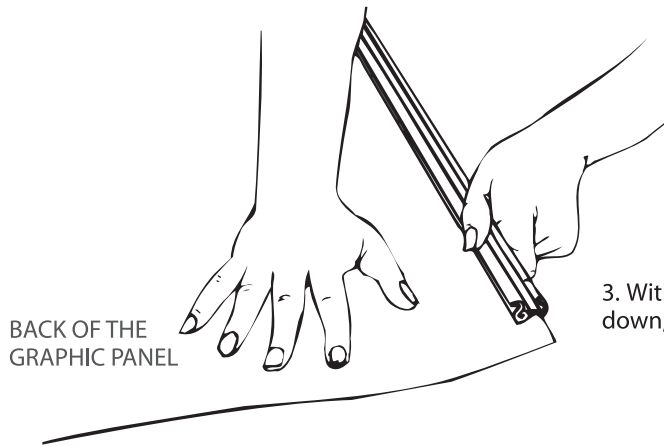
# How to handle the Expand MediaScreen 2 outdoor profiles



1. Use a flat blade screwdriver (or similar tool) to remove the plastic profile-lock from each end of the profile.

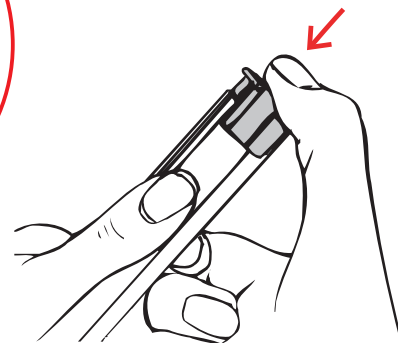
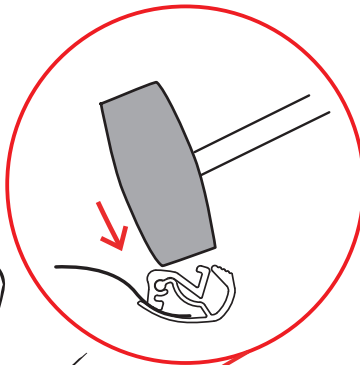
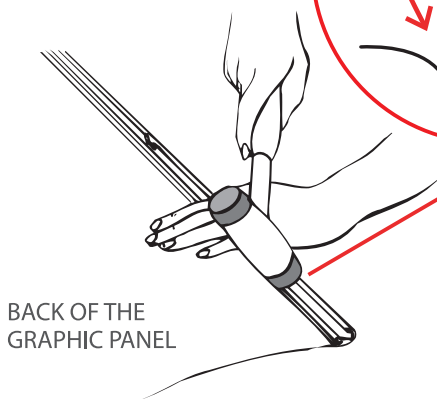


2. Use a flat blade screwdriver (or similar tool) to open the profile.



3. With the front of the graphic panel facing down, slide the profile onto the graphic.

4. Close the profile by using a rubber mallet or hammer.



5. Press the plastic profile-lock into each end of the profile.